

Using Dichotomous Key

Name: _____.

Block: _____

Use the dichotomous key(Appendix C) provided to identify the critters you have been given (Appendix B).

A1: _____

A2: _____

A3: _____

A4: _____

A5: _____

A6: _____

A7: _____

A8: _____

Questions:

1. Which animal do you think A8 is most related to and why?

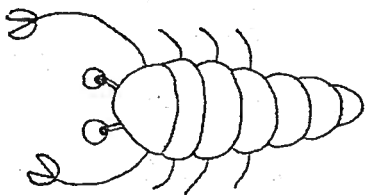
2. Do you think a different key could be made to achieve the same end result of identifying all the cartoon animals? Why or why not?

3. What do you think makes a good dichotomous key?

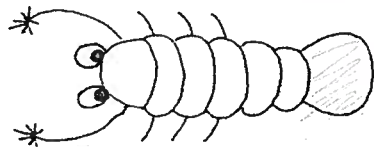
Appendix C – Set A Dichotomous Key

- 1a. Has 6 legs.....(2)
1b. Has 8 legs.....(6)
- 2a. Has pincers.....(3)
2b. Has fingers.....(5)
- 3a. Legs are long.....*Chelicerus longacrus*
3b. Legs are short.....(4)
- 4a. Eye stalks present.....*Chelicerus stipula*
4b. Eye stalks absent.....*Chelicerus scilla*
- 5a. Tail is pointed.....*Palma thyrus*
5b. Tail is large and round.....*Palma magnocauda*
- 6a. Antennae present.....(7)
6b. Antennae absent.....*Octocrus archetypum*
- 7a. Long antennae.....*Octocrus mirum*
7b. Short antennae.....(8)
- 8a. Pointed feet.....*Octocrus spicupede*
8b. Rounded feet.....(9)
- 9a. 1 foot per leg.....*Rotundopedus unipede*
9b. 2 feet per leg.....*Rotundopedus bipede*

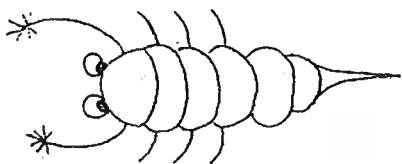
Appendix B – Cartoon Animals (Set A)



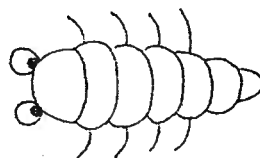
A4



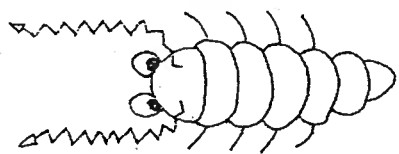
A8



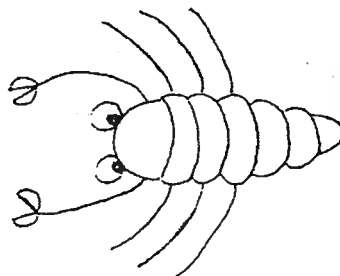
A3



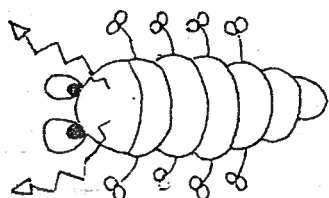
A7



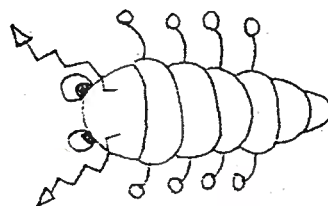
A2



A6



A1



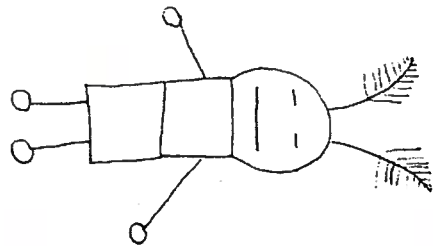
A5

Drawing a Dichotomous Key

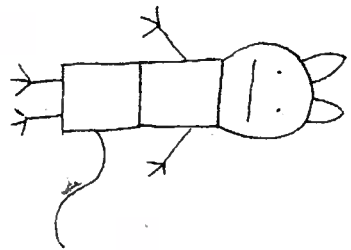
Use the 8 aliens cut outs provided to make a dichotomous key.

1. Start by separating them into 2 groups based on a shared characteristic.
2. Then separate each into 2 more groups based on a shared characteristics.
3. Continue to do so until you have all 8 into its own group.

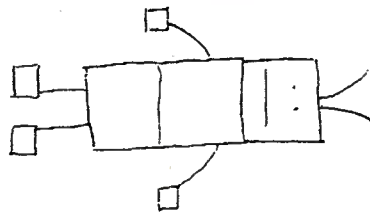
Draw your dichotomous tree below. There is more than one answer.



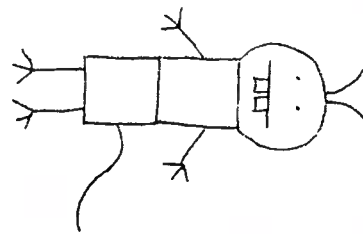
B4



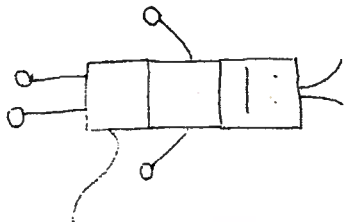
B3



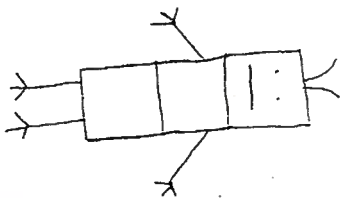
B2



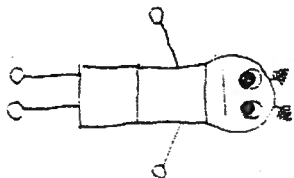
B1



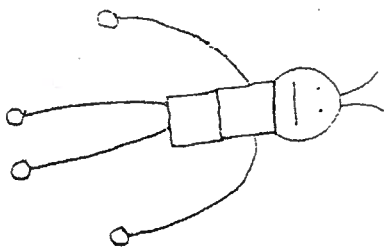
B38



B7



B6



B5